

Joaquín Valdés et al.:

Organotypic Retinal Explant Cultures as *In Vitro* Alternative for Diabetic Retinopathy Studies

Supplementary Data

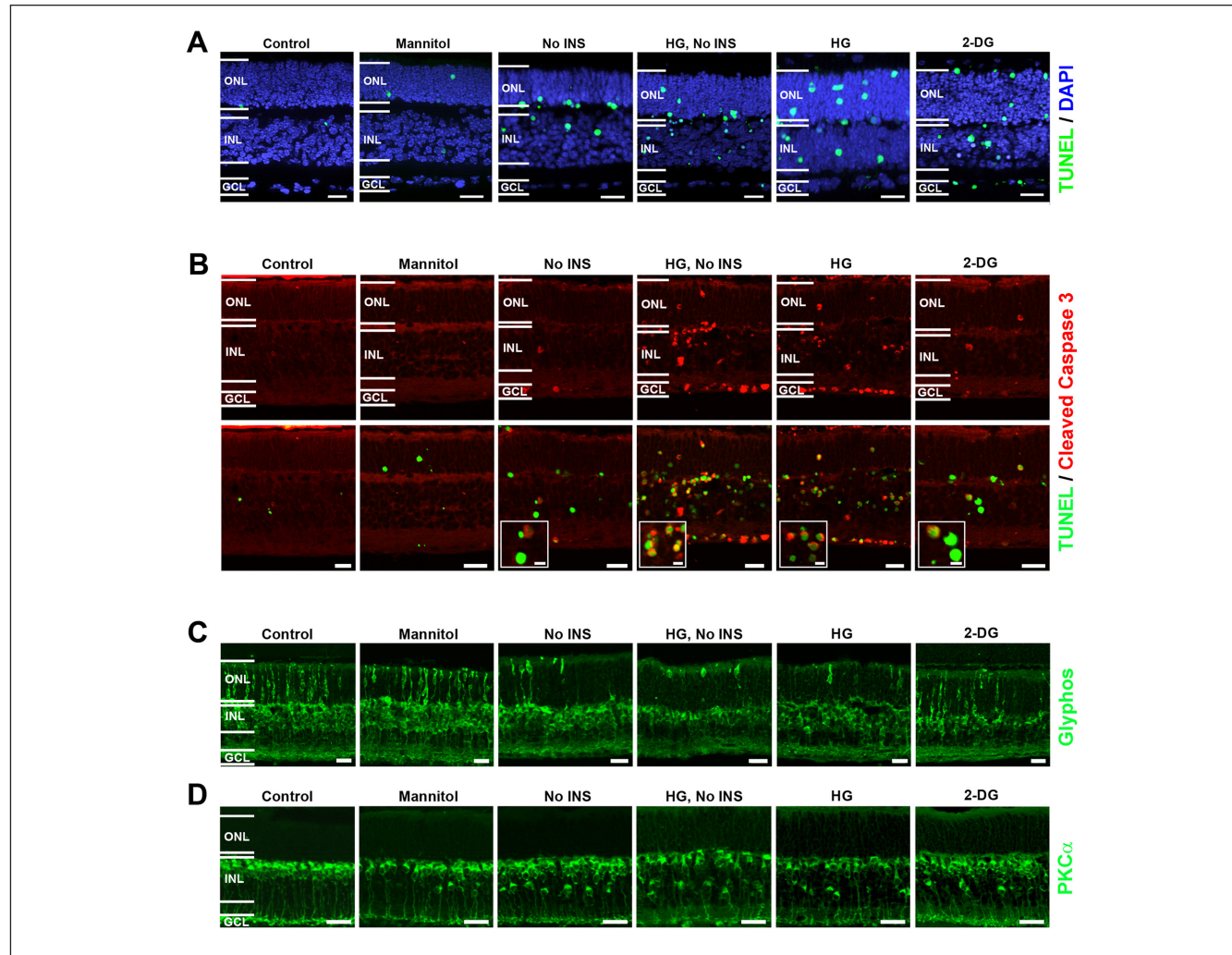


Fig. S1: Images of retinal explants labeled with cell death and cell type markers under different experimental diabetes-like conditions as defined in Table 1

(A) Representative images of TUNEL-labeled (green) retinal explants. The explants are counterstained with DAPI (blue). (B) Representative images of cleaved, activated caspase-3 staining (red) and double labeling with TUNEL (green). (C) Explants from the different experimental conditions were labeled with antibodies against glycogen phosphorylase as a marker of cone photoreceptors. (D) Retinal explant labeling of PKC α to mark rod bipolar cells under each experimental condition. Scale bars = 20 μ m; inset scale bars = 10 μ m.



This is an Open Access article distributed under the terms of the Creative Commons Attribution 4.0 International license (<http://creativecommons.org/licenses/by/4.0/>), which permits unrestricted use, distribution and reproduction in any medium, provided the original work is appropriately cited.

<http://dx.doi.org/10.14573/altex.1603111s>