

Characterization and Optimization of Variability in a Human Colonic Epithelium Culture Model

Supplementary Data

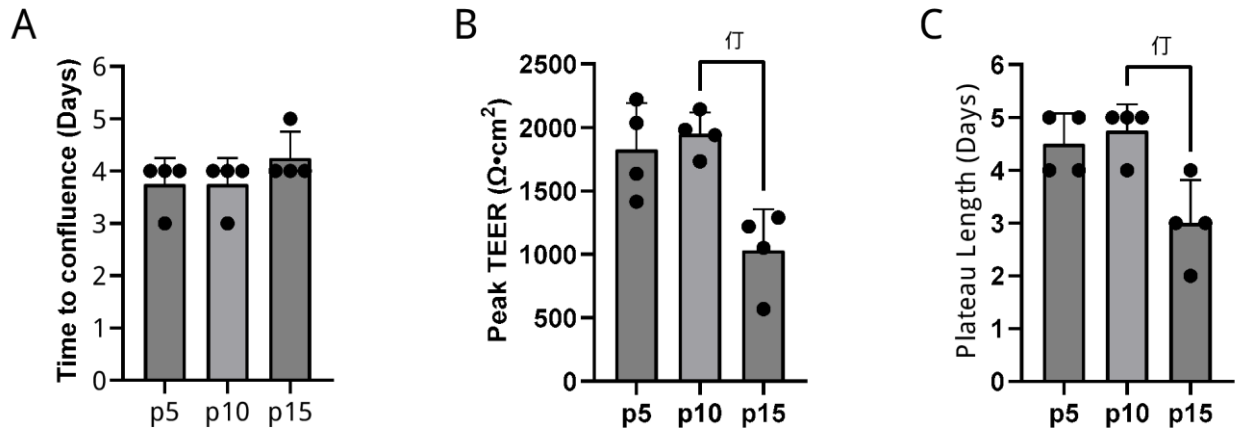


Fig. S1: TEER metrics of different cell passage numbers

Bar graphs of four independent runs from each passage denoting (A) days to confluence, (B) peak TEER, and (C) plateau length (* $p < 0.05$, Kruskal-Wallis test). Data are represented as mean \pm SD. $n = 4$ technical replicates.

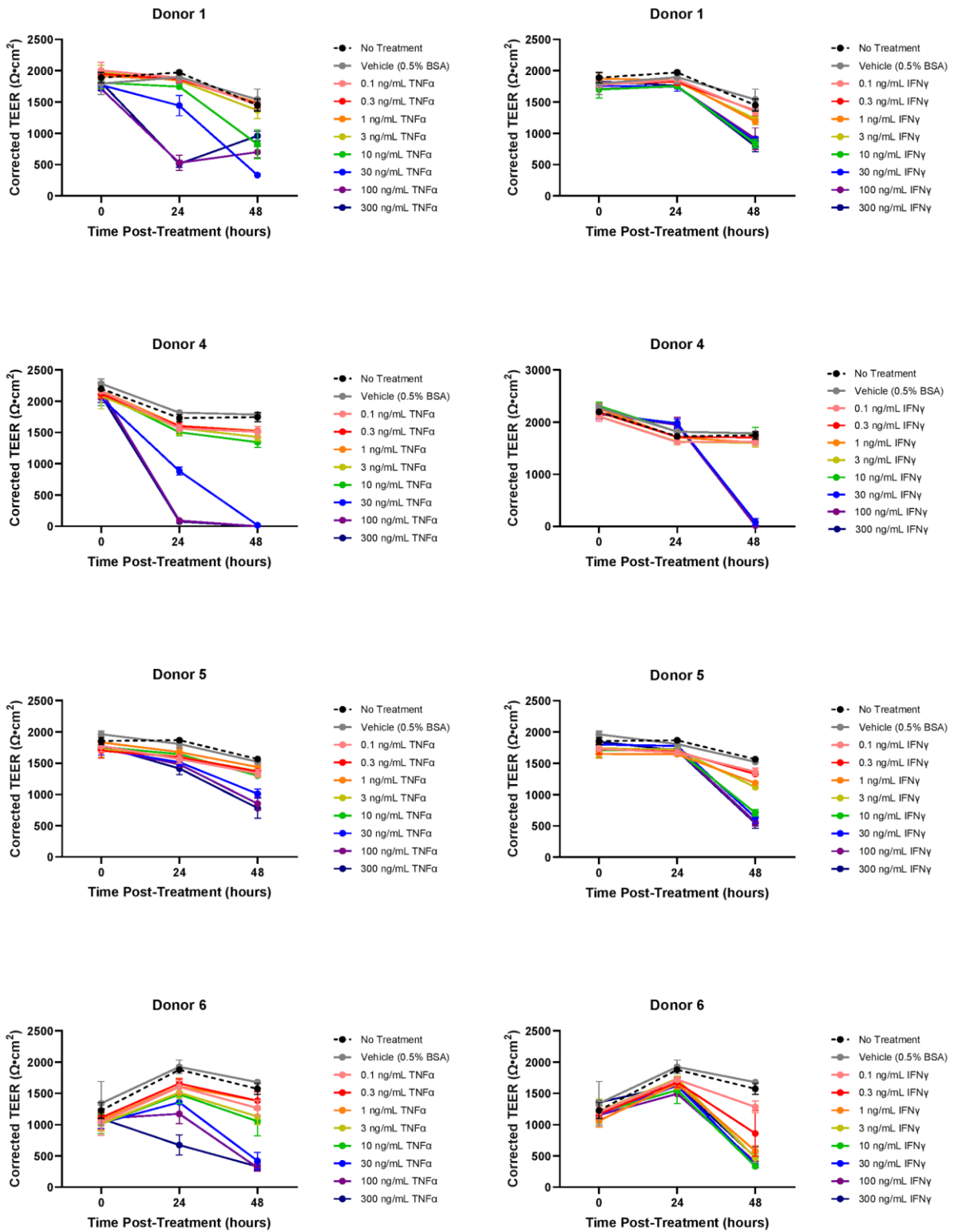


Fig. S2: TEER of Donors 1, 4, 5 and 6 treated with TNFα or IFNγ from the RepliGut® case study
 Data are represented as mean ± SD. n = 4 biological replicates.

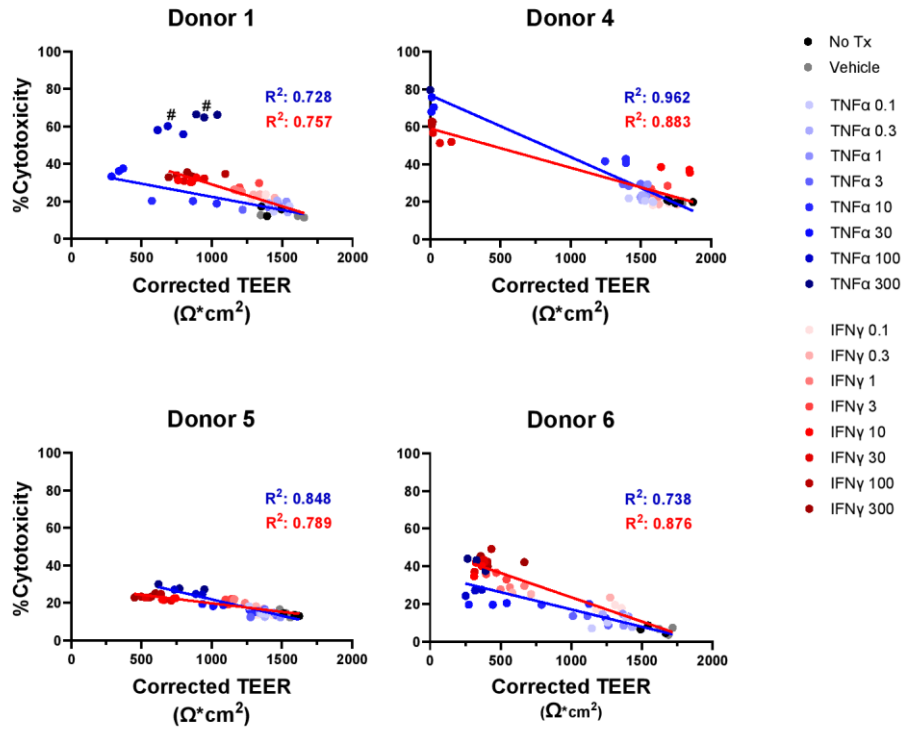


Fig. S3: Donor-to-donor differences in LDH activity (% cytotoxicity) in response to TNFα or IFNγ
 Correlation plots between LDH activity increase and barrier decrease (TEER) for TNFα (blue) and IFNγ (yellow) for each donor as indicated. R^2 values are noted in insets. $n = 3$ technical replicates.